

TB 79B

STANNAH LIFTS LTD

TECHNICAL BULLETIN

MAINTENANCE ISSUE

For the Attention of : Service Engineers, Installers, Trade Customers, Testers.

Date : 11th Aug 2009

Product : System 21 Passenger Lifts

Subject : Optical proximity switches (OPS), operational testing.

Pages : 1 of 3

Originator : Stannah Lifts Ltd, Anton Mill, Andover, Hants SP10 2NX 01264 339090

Background

This Technical Bulletin supersedes TB79A dated 11th June 2009.

- This information only affects passenger lifts manufactured after April 2007 up until March 2009.
- If the OPS has 'REV B' or 'Issue C' written on its label then it is from a 'good' batch and should not need replacing. This bulletin can be ignored. See diagram 1 at the end of this document for clarification of identification.
- This also includes OPS units purchased as spares during the same period.

Detail

Further investigations into the returned faulty Optical Proximity Switches (OPS) have identified that all OPS units supplied within this period are fitted with LEDs that can provide a weak signal causing the lift to experience intermittent faults. However we believe that only around 5% behave like this.

We are now advising that the OPS units should only be replaced on lifts that have had a breakdown related to the failure of the OPS units.

Symptoms that indicate a possible OPS problem are as follows ;

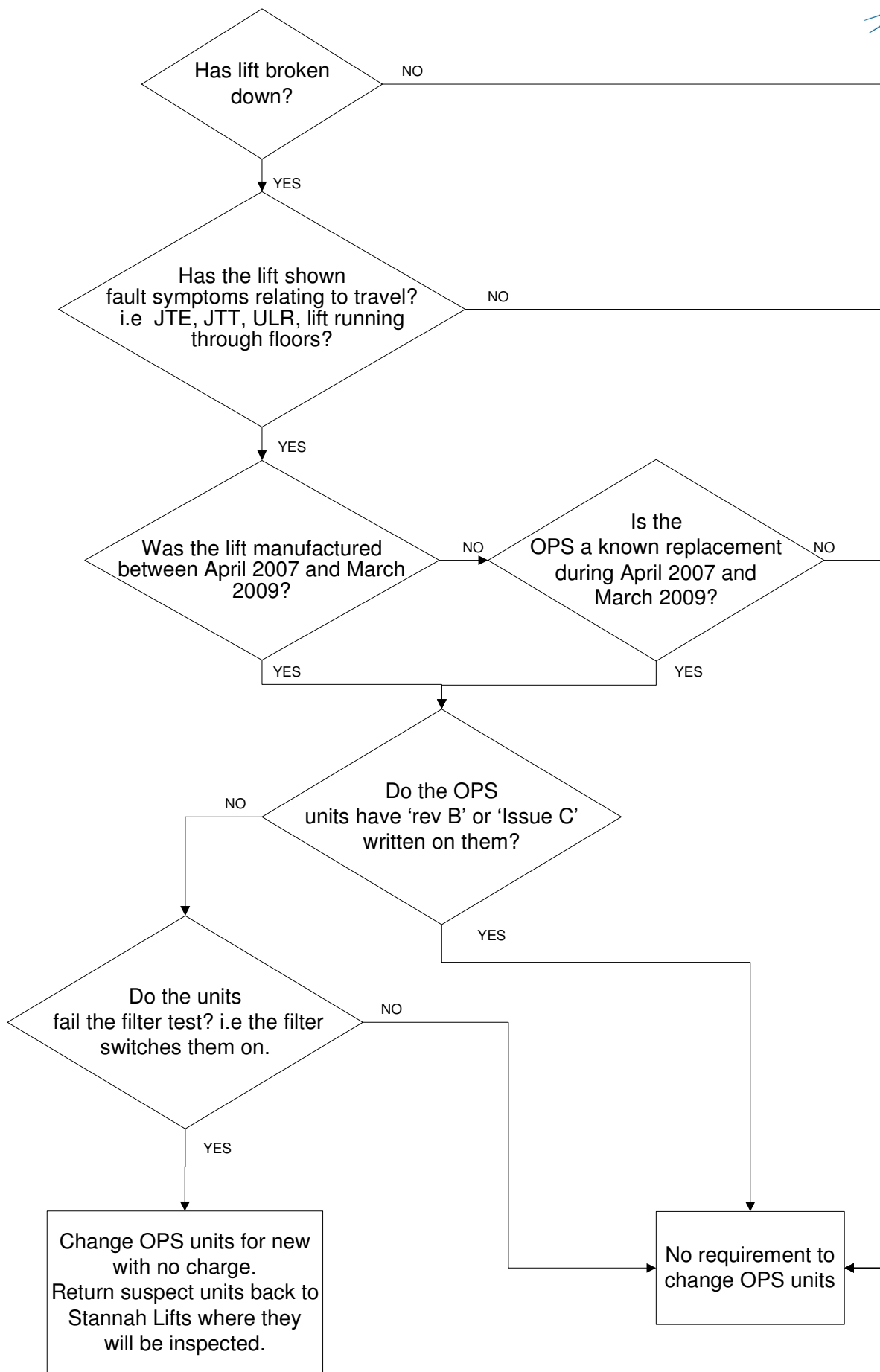
- Lift out of service with a JTT (journey timer) fault
- JTE event logged.
- Lift out of service with a ULR (Ultimate limit)
- Lift running through floors.

All OPS units supplied within the period April '07 to March '09 will be covered under an extended warranty for a period of 3 years from date of test and handover.

Action

Only those OPS units that have shown symptoms of possible failure in service as documented above and on the following flowchart need to be replaced.

Replacements for faulty units can be ordered from Stannah Lifts.





IDENTIFICATION

BOTH UNITS ARE FROM GOOD STOCK AND HAVE CORRECT SPECIFICATION LED FITTED.

IDENTIFICATION

Diagram 1

If you have any questions regarding the above please contact the electrical design department at Stannah Lifts. Graham Cooper 01264 343657